

A detailed architectural floor plan drawing is shown, featuring various rooms and structural elements. The drawing includes a central area with a toilet and a sink, a room with a window labeled 'D/W', and another room with a window labeled 'ST'. There are also various lines representing walls, doors, and furniture. A brown rectangular box is overlaid on the center of the drawing, containing the text 'FLOOR PLAN'.

FLOOR PLAN

10'0

Site Plan

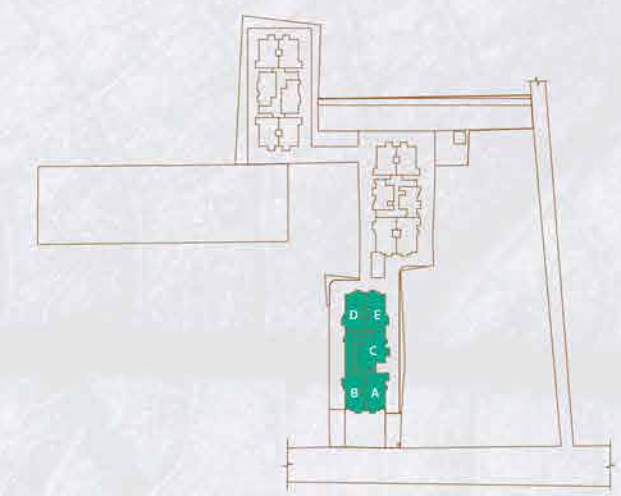


Floor Plans



BLOCK - A | 3RD TO 7TH FLOOR

TYPE	BHK	CARPET AREA	BALCONY AREA	PERIPHERY WALL AREA	BUA	SBUA
FLAT A	3	851 sqft	63 sqft	87 sqft	1001 sqft	1252 sqft
FLAT B	3	851 sqft	63 sqft	87 sqft	1001 sqft	1252 sqft
FLAT C	3	1018 sqft	108 sqft	88 sqft	1214 sqft	1519 sqft
FLAT D	3	851 sqft	63 sqft	87 sqft	1001 sqft	1252 sqft
FLAT E	3	851 sqft	63 sqft	87 sqft	1001 sqft	1252 sqft

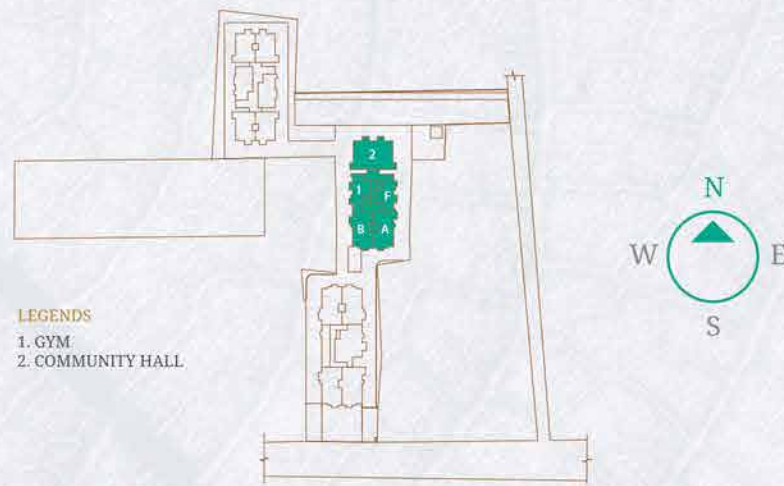


Floor Plans

BLOCK - B | 1ST FLOOR

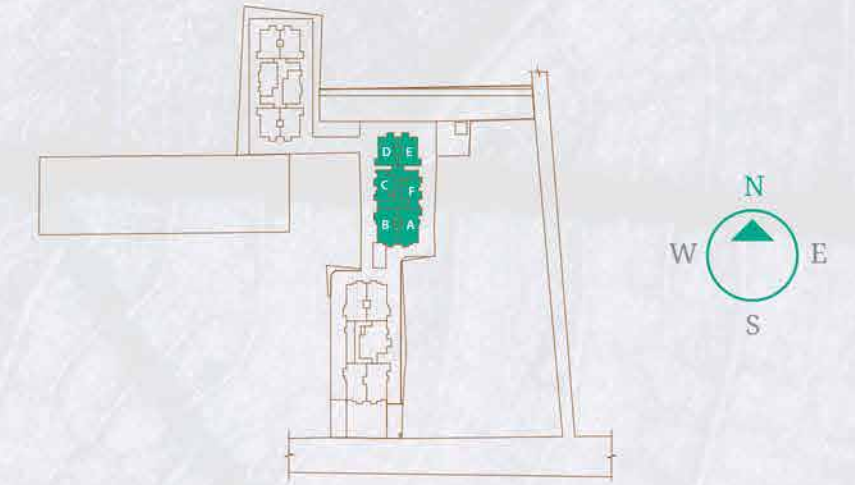
TYPE	BHK	CARPET AREA	BALCONY AREA	PERIPHERY WALL AREA	BUA	SBUA
FLAT A	3	835 sqft	63 sqft	88 sqft	986 sqft	1233 sqft
FLAT B	3	835 sqft	63 sqft	88 sqft	986 sqft	1233 sqft
FLAT F	2	536 sqft	59 sqft	79 sqft	674 sqft	842 sqft
GYM	-	486 sqft	-	-	538 sqft	-
COMMUNITY HALL	-	1428 sqft	152 sqft	-	1672 sqft	-

LEGENDS
1. GYM
2. COMMUNITY HALL



BLOCK - B | 2ND TO 7TH FLOOR

TYPE	BHK	CARPET AREA	BALCONY AREA	PERIPHERY WALL AREA	BUA	SBUA
FLAT A	3	835 sqft	63 sqft	88 sqft	986 sqft	1233 sqft
FLAT B	3	835 sqft	63 sqft	88 sqft	986 sqft	1233 sqft
FLAT C	2	545 sqft	58 sqft	78 sqft	681 sqft	852 sqft
FLAT D	3	644 sqft	70 sqft	60 sqft	774 sqft	968 sqft
FLAT E	3	644 sqft	70 sqft	60 sqft	774 sqft	968 sqft
FLAT F	2	536 sqft	59 sqft	79 sqft	674 sqft	842 sqft

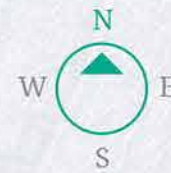
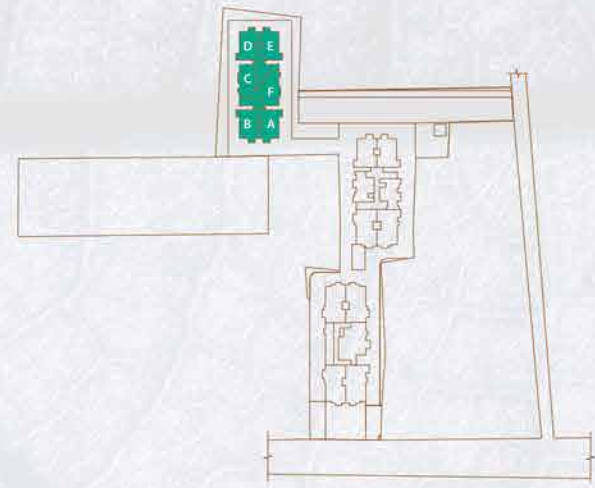


Floor Plans



BLOCK - C | 1ST TO 8TH FLOOR

TYPE	BHK	CARPET AREA	BALCONY AREA	PERIPHERY WALL AREA	BUA	SBUA
FLAT A	3	644 sqft	70 sqft	60 sqft	774 sqft	968 sqft
FLAT B	3	644 sqft	70 sqft	60 sqft	774 sqft	968 sqft
FLAT C	2	577 sqft	75 sqft	70 sqft	722 sqft	903 sqft
FLAT D	3	644 sqft	70 sqft	60 sqft	774 sqft	968 sqft
FLAT E	3	644 sqft	70 sqft	60 sqft	774 sqft	968 sqft
FLAT F	2	577 sqft	75 sqft	70 sqft	722 sqft	903 sqft



Front View